



FS0822 - 800lb Flake Ice Machine

Prodigy Plus® Flake Ice Machine



Features & Benefits

- Sealed, maintenance-free bearings for reduced preventative maintenance and long-lasting performance
- Stainless steel evaporator and auger for maximum durability
- AutoAlert™ indicator lights for better visibility
- Operational footprint among the industry's smallest
- Unit specific QR code for quick access to service manuals, cleaning guides and warranty history
- Front-breathing - No side clearance required for flexible placement
- Smart-Board™ advanced feature module available for additional diagnostic capabilities
- Optional Vari-Smart™ ice level control allows operators to customize ice levels
- Antimicrobial protection guards internal surfaces between cleanings
- A full range of water- and energy-saving features



Sealed, maintenance-free bearings ensure maximum reliability and contribute to a long machine life



24 Hour Volume Production

| Air Cooled | | Remote Cooled | | Water Cooled | |
|------------------------|--------------|------------------------|------------------------|------------------------|------------------------|
| 70°F/21°C 50°F/10°C | Air Water | 90°F/32°C 70°F/21°C | 70°F/21°C 50°F/10°C | 90°F/32°C 70°F/21°C | 70°F/21°C 50°F/10°C |
| 800/363 lb/kg | | 606/275 lb/kg | 760/345 lb/kg | 589/267 lb/kg | 775/352 lb/kg |



Modular Bin Options

| Model Number* | Dimensions W" x D" x H" | Bin Application Capacity lb/kg | Finish | Ship Weight lb/kg |
|---------------|-------------------------|--------------------------------|----------|-------------------|
| B322S | 22 x 34 x 44** | 370/168 | Metallic | 140/64 |
| B330P | 30 x 34 x 31** | 344/156 | Poly | 90/41 |
| B530P | 30 x 34 x 44** | 536/244 | Poly | 110/50 |
| B530S | 30 x 34 x 44** | 536/244 | Metallic | 150/68 |
| B842S | 42 x 34 x 44** | 778/353 | Metallic | 190/86 |
| B948S | 48 x 34 x 44** | 893/406 | Metallic | 209/95 |

* Contact Scotsman for bin top requirements. ** Add 6" Height for bin legs.



Flake Ice



Cools more quickly than other ice forms. Ideal for seafood and produce displays.



Certification



Warranty

- 3 years parts and labor on all components.
- 5 years parts on the compressor.
- Warranty valid in North, South & Central America for commercial installations.
- Contact factory for warranty in other regions.
- Residential Applications: 1 year parts and labor

Scotsman®

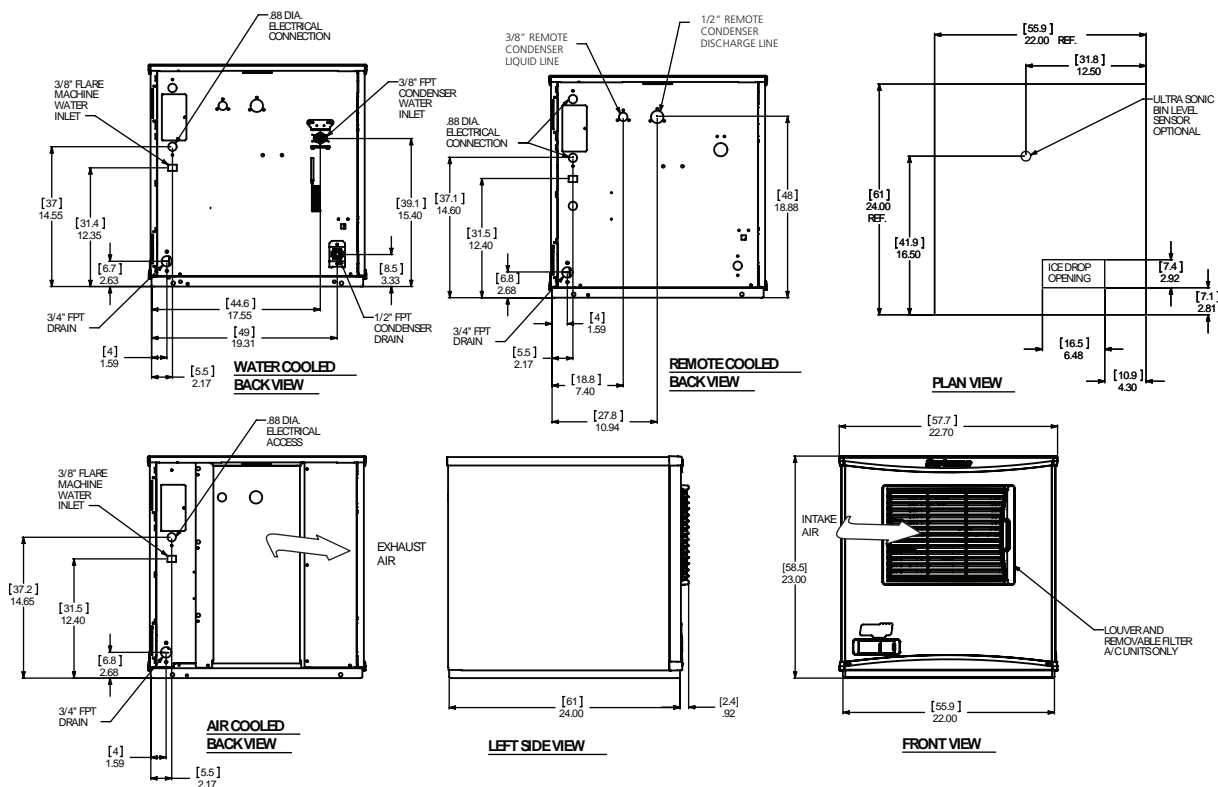
101 Corporate Woods Parkway, Vernon Hills, IL 60061

1-800-SCOTSMAN | Fax: 847-913-9844 | www.scotsman-ice.com | customer.relations@scotsman-ice.com

FS0822 - 800lb Flake Ice Machine

FS0822 - 800lb Flake Ice Machine

Prodigy Plus® Flake Ice Machine



Specifications

| Model Number | Condenser Unit | Basic Electrical Volts/Hz/Phase | Max. Fuse Size or HACR Circuit Breaker (amps) | Circuit Wires | Min. Circuit Ampacity | Energy Consumption kWh/100 lb (45.4 kg) 90°F(32°C)/70°F(21°C) | Water Usage Gallons/100 lb (liters/45.4 kg) | | Energy Star |
|--------------|----------------|---------------------------------|---|---------------|-----------------------|---|---|---------------------------------|-------------|
| | | | | | | | Potable 90°F(32°C)/70°F(21°C) | Condenser 90°F(32°C)/70°F(21°C) | |
| FS0822AX-1 | Air | 115/60/1 | 20 | 2 | 14.8 | 3.52 | 12.0/45.5 | - | ★ |
| FS0822R-1 | Remote | 115/60/1 | 25 | 2 | 19.4 | 5.8 | 12.0/45.5 | - | |
| FS0822WX-1 | Water | 115/60/1 | 15 | 2 | 13.2 | 2.92 | 12.0/45.5 | 120/454.8 | |



All Models

Dimensions (W x D x H):

Unit: 22" x 24" x 23"
(55.9 x 61.0 x 58.4 cm)

Shipping Carton: 25.5" x 27.5" x 28.5"
(64.8 x 69.9 x 72.4 cm)

Shipping Weight:
175 lb / 79 kg

BTUs per hour:
7,100

| Model Number | Refrigerant | Refrigerant Charge (oz) |
|--------------|-------------|-------------------------|
| FS0822AX-1 | R290 | 6.5 |
| FS0822R-1 | R-404A | 192 |
| FS0822WX-1 | R290 | 5.25 |



Accessories

| Model Number | Description |
|--------------|--|
| KVS | Vari-Smart™ Ice Level Control - Program ice bin levels to match ice needs. |
| KSBU | Smart-Board™ Advanced Control - Use additional operational data for fast diagnosis. |
| KSBU-N | Smart-Board™ Advanced Control with Network - Network capable. |
| KPAS | Prodigy Advanced Sustainability Kit - Includes KVS and KSBU - N |
| ERC111-1 | Remote condenser for F0822R, 115/60/1 - Consult remote condenser spec sheet for details. |
| BRTE10 | 10ft (3.0 m) line set, brazing required |
| BRTE25 | 25ft (7.6 m) line set, brazing required |
| BRTE40 | 40ft (12.2 m) line set, brazing required |
| BRTE75 | 75ft (22.9 m) line set, brazing required |

Scotsman recommends all ice machines have water filtration. See Scotsman water filter specification sheet for details.



Operating Requirements

| | Minimum | Maximum |
|--------------------|-------------------|-------------------|
| Air Temperatures | 50°F (10°C) | 100°F (38°C) |
| Water Temperatures | 40°F (4.4°C) | 100°F (38°C) |
| Remote Cond. Temps | -20°F (-29°C) | 120°F (49°C) |
| Water Pressures | 20 PSIG (1.4 bar) | 80 PSIG (5.5 bar) |
| Electrical Voltage | -5% | +10% |

Specifications and design are subject to change without notice.